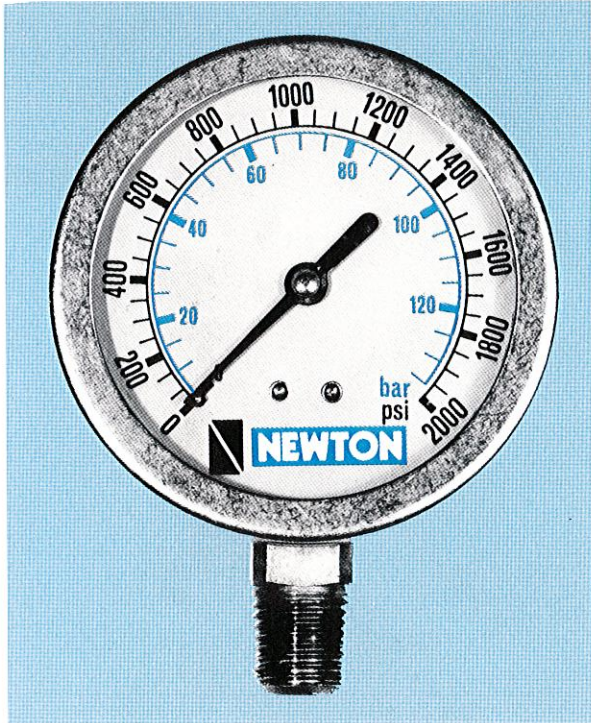




NEWTON

PRESSURE GAUGES 2-1/2" DIA. DIAL -- GLYCERINE FILLED



FEATURES

BOURDON TUBE:
For pressures to 600 psi a "C" shaped tube is used; for pressures above 600 psi a multi-spiral tube is used.

DIAL COVER: Polystyrene

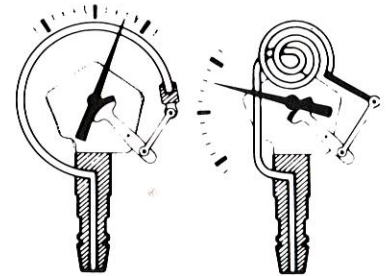
CONNECTION: Brass

CASE and RING:
AISI 304 s.s.

MOVEMENT: Plates are AISI 304 s.s.; pinion and link segment are clock-work type brass

ACCURACY: ±1.6%

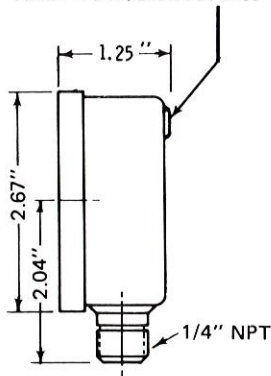
RANGES & GRADUATIONS:
PSI (black) and BAR (blue)



MAXIMUM DIAL READING SELECTION: 75% of scale range for constant pressure; 66% of scale range for variable pressure.

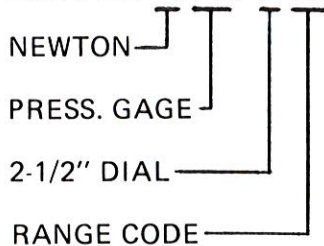
PULSATION DAMPENER:
Standard

Relief Valve/Blowout Disc



ORDERING INFORMATION

Model: NPG-206



RANGE CODE

- 06 = 0 - 600 PSI
- 10 = 0 - 1000 PSI
- 15 = 0 - 1500 PSI
- 20 = 0 - 2000 PSI
- 30 = 0 - 3000 PSI
- 50 = 0 - 5000 PSI

METRIC

- 0 - 41 BAR
- 0 - 70 BAR
- 0 - 102 BAR
- 0 - 135 BAR
- 0 - 205 BAR
- 0 - 340 BAR

N 1037 4/79



NEWTON MANUFACTURING CO.

4249 DELEMERE BLVD. • ROYAL OAK, MICH. 48073
TELEPHONE: (313) 549-9600 • FAX: (313) 549-7520

