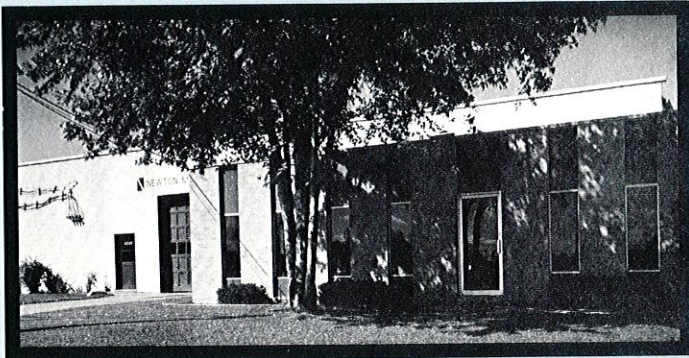
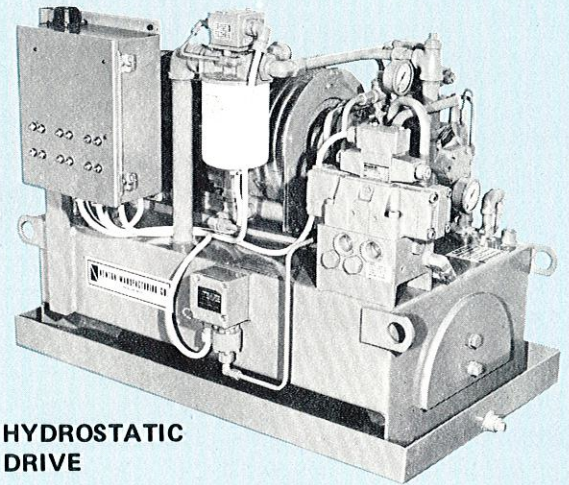


**HYDRAULIC • HYDROSTATIC
PNEUMATIC • FILTRATION
LUBRICATION**

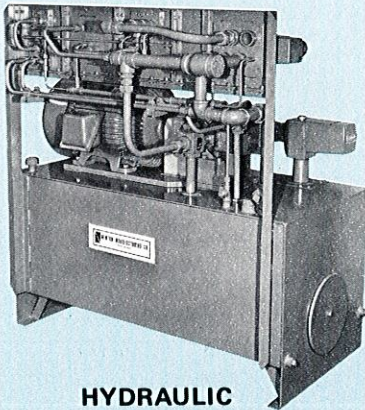
SYSTEMS



Our staff, in our modern, completely equipped manufacturing plant of 13,000 square feet, has 24 years of experience in custom hydraulic tube bending, tube flaring, piping, machining, steel fabrication, panel wiring and package assembly.



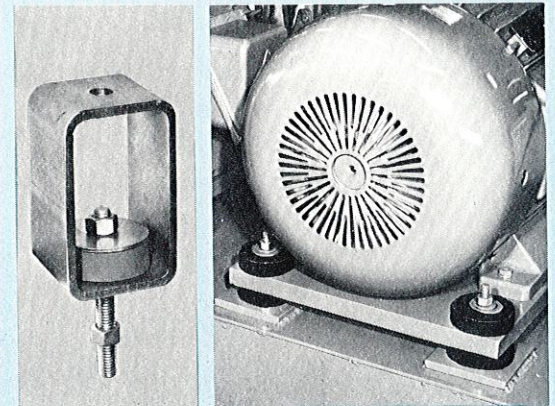
HYDROSTATIC DRIVE



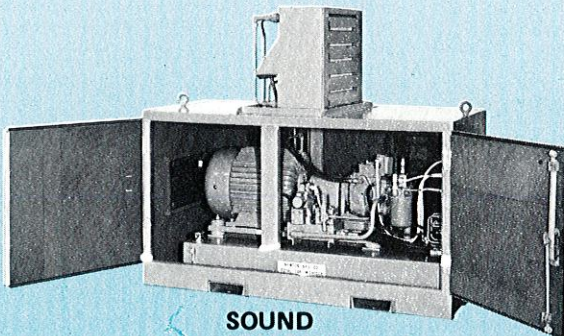
HYDRAULIC POWER UNIT



SAE FLANGE PUMP FOOT MOUNTS

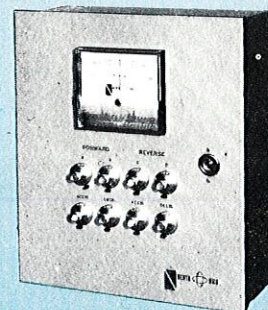


VIBRATION DAMPING MOUNTS

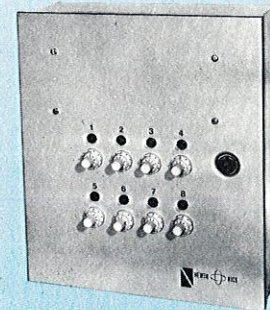


SOUND ENCLOSURE

NEWTRONICS CONTROLS



PUMP SERVO CONTROLLER



ELECTRONIC LIMIT SWITCH



POSITION INDICATOR

N 1053



NEWTON MANUFACTURING CO.

4249 DELEMERE BLVD. • ROYAL OAK, MICHIGAN 48073
PHONE: (313) 549-9600 • TWX: 810-232-4894

